

CAMILLA OCCASIONAL CHAIR

Formal and uniqueness extrude throughout. Angular styled arms with small raised details relax you in stately comfort. Tufted seat and high back support make this perfect chair for those needing extra support. Lovely satin brass finish highlights every detail.

Tufted seat / Fixed. Satin Brass finish. Available in Leather and Fabric

Dimensions: 34"x35"x35"H - 86x88x89H cm

Seat Height: 17" - 43 cm

Seat Depth: 21" - 54 cm

ITEMS

SKU	DESCRIPTION	DIMENSIONS (cm)	DIMENSIONS (in)	NOTES
0440	"CAMILLA" occasional chair	86 x88 x89	34 x35 x35	



STONE
INTERNATIONAL

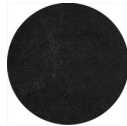
FINISHES



Metal Finishes
Brushed Brass
(SB)



Leathers
Old Brown
(130)



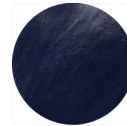
Leathers
Old Black
(131)



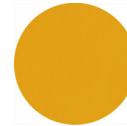
Leathers
Cream
(133)



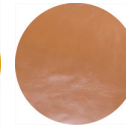
Leathers
Graphite Grey
(313)



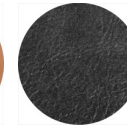
Leathers
Blue
(314)



Leathers
Saffron Yellow
(315)



Leathers
Whiskey
(316)



Leathers
Black
(333)



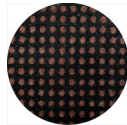
Leathers
Embossed
White Alligator
(402)



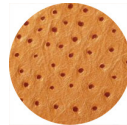
Leathers
Embossed Black
Alligator
(403)



Leathers
Embossed Grey
Alligator
(404)



Leathers
Pois
(450)



Leathers
Embossed
Ostrich
(459)



Leathers
Pearl White
(469)



Leathers
Embossed
Crocodile Tan
(472)



Leathers
Embossed
Crocodile
Burgundy
(473)



Leathers
Embossed
Crocodile Grey
(474)



Leathers
Embossed
Crocodile Black
(475)



Leathers
Embossed
Crocodile
Champagne
(476)



Leathers
Silver Crocco
(492)



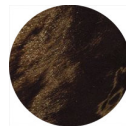
Leathers
Pony Black
(500)



Leathers
Pony Beige
(502)



Leathers
Pony Tri-colored
(503)



Leathers
Pony Brown
(510)



Leathers
Pony Bay
(513)